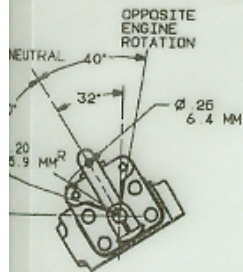


DETROIT DIESEL
CORPORATION

13400 Outer Drive, West / Detroit, Michigan 48239-4001



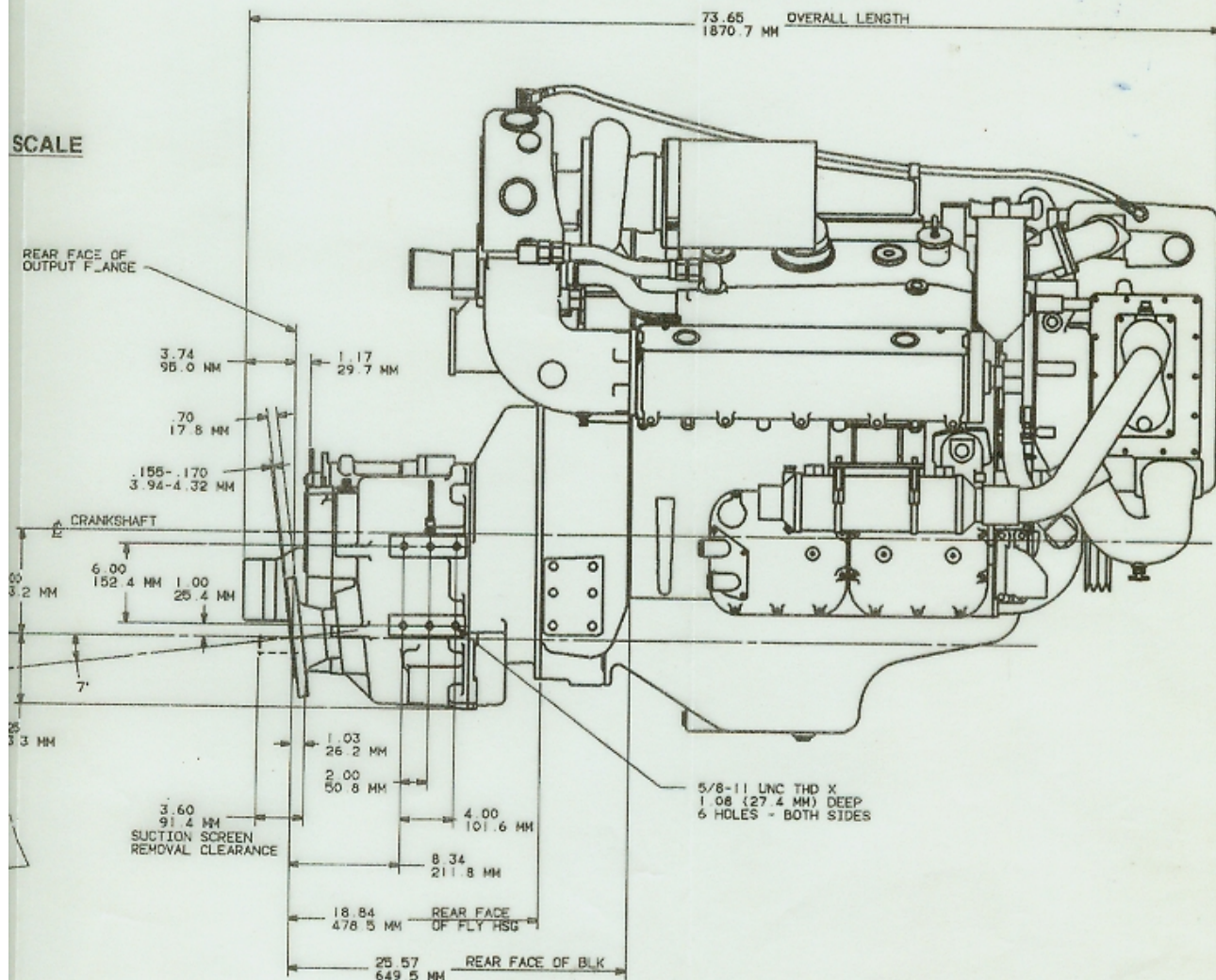
MARINE GEAR CONTROL LEVER
ENLARGED VIEW

FORCED TO OPERATE
10-30 LBS (44-133 N_a)

DRAWING IS CURRENT AS OF: 8-15-89

Due to technological advancements, this drawing is subject to change. Check with your DDC Distributor to make sure you have the most current drawing.

IONS SUBJECT TO CHANGE WITHOUT NOTICE.



MODEL 8082-7400 2SA520A

INSTALLATION DWG
04645

SK-10312 SHEET NO. 1	GROUP NO. REF.	DESCRIPTION-TITLE:	COMPUTER GRAPHICS CHANGE RESTRICTED	DR. DIA	DRAWING NO.
	785-1177 & 1180 788A-302	8082-7400 WITH DO-5111A (MARINE GEAR) AVAILABLE GEAR RATIOS 1.48 & 1.92	DATE	DR.	THIRD ANGLE PROJECTION
DW. L. NEMETH DATE 30MR89			SK-10312 SHEET NO. 1		